



V SERIES

16-GH, 24-GH & 32-GH

PATENTED MODULAR U-TURN GARMENT



LEONARD AUTOMATICS, INC.

"our reputation is stainless"®

The **V Series U-turn** tunnel finishers are the perfect fit for high volume industrial laundry applications. The U-turn configuration allows for **higher production** within a relatively small footprint while containing the heat and controlling the airflow more efficiently than in standard straight through models.

As the leading innovators in tunnel finisher design and construction, Leonard Automatics, Inc., works hard to continually improve our products. It is our goal to provide you with equipment made from the highest quality materials and components so you can be assured the equipment you purchase will provide years of trouble-free service.

An important feature was added to the V Series U-Turn Garment Finisher... expandability! With our patented process, your new finisher can grow as the demands of your business grow. With Leonard Automatics as your partner, you will never outgrow your investment. Your new V Series finisher could be the last tunnel you ever buy.

"our reputation is stainless"®

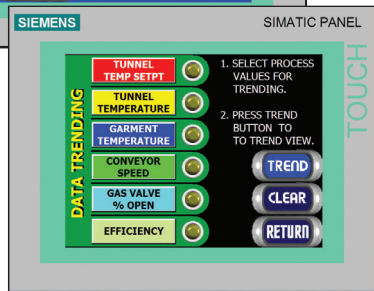
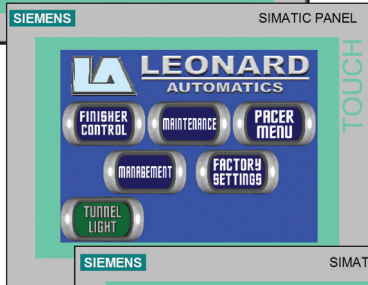
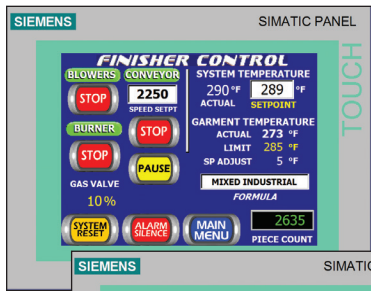
And, so is our equipment. Just like the rest of our tunnels the V Series finishers are constructed with **stainless steel panels** to provide the high level of corrosion resistance needed for continued operation in the extreme environment of an industrial laundry.



Preconditioning

The finishing of a garment starts in the steam chamber. The design of our steam header creates **high velocity** steam that carries more energy to the garment and achieves proper finishing temperature faster. More steam heat is delivered to the garment resulting in better temperature rise without increasing floor space requirements. The steam tube configuration fully surrounds the garment with steam.





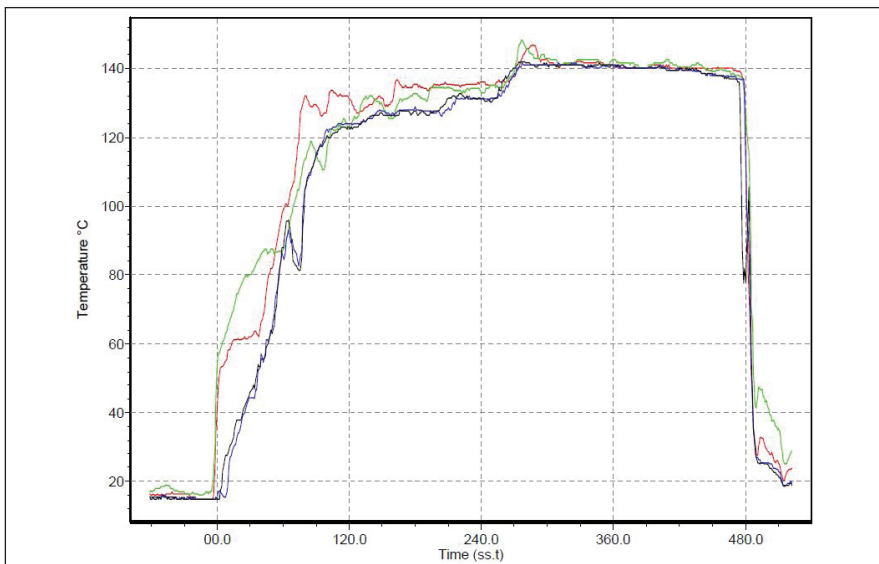
PLC Control System

Leonard Automatics is proud to feature the **PLC Interface Control Center** on our V Series finishers. The touch screen allows for intuitive and straightforward access to all tunnel operational controls. Features include automated troubleshooting, maintenance schedules, alarm logs, PM schedule, runtime history and much more. **Total tunnel control** is now at your fingertips.

OTHER V SERIES FEATURES & OPTIONS

- *Automated troubleshooting*
- *Automated maintenance scheduling and prompts*
- *Alarm history*
- *Maintenance history*
- *Password Protected Admin Functions*
- *Automated over-temperature shut-down*
- *Lint filter monitoring*
- *Ethernet module*
- *External blower shaft*
- *Factory installed exhaust system*
- *External steam header*
- *External wiring*
- *Rear door safety shut-down*
- *Adjustable air louvers*
- *Patented "Simple Addition" modularity*
- *Infrared temp. control*
- *Pacer Production Management System*
- *Burner & Conveyor Interlock System*
- *UL Listed Control Panel*

Real Data



Shown is actual temperature data* taken from within an actual **VTP Series** machine in production. Probes recorded the air temperature above the garment (**RED**), the garment temperature inside the shirt pocket (**GREEN**) and inside the tail of the shirt (**BLUE**), and the air temperature 6 inches below the garment (**BLACK**). The temperature differential between the red and black lines show that moisture is being removed through evaporation. As the four lines converge, the garment is dry and the finishing is complete.

*Data reflects extracted pants being processed.

TECHNICAL SPECIFICATIONS

	V-16 GH	V-24 GH	V-32 GH
Machine Size			
Length (in/mm):	217 / 5,512	309 / 7,849	401 / 10,185
Width (in/mm):	60 / 1,524	60 / 1,524	60 / 1,524
Height (in/mm):	106 / 2,692	106 / 2,692	106 / 2,692
Weight (lbs/kg):	5,800 / 2,636	8,300 / 3,772	10,800 / 4,909

Electrical Service *(standard equipment with no exhaust)*

Standard Voltage:	230 or 460 / 60hz / 3ph		
Full Load Amps:	60 / 30	60 / 30	68 / 34

Steam Requirements

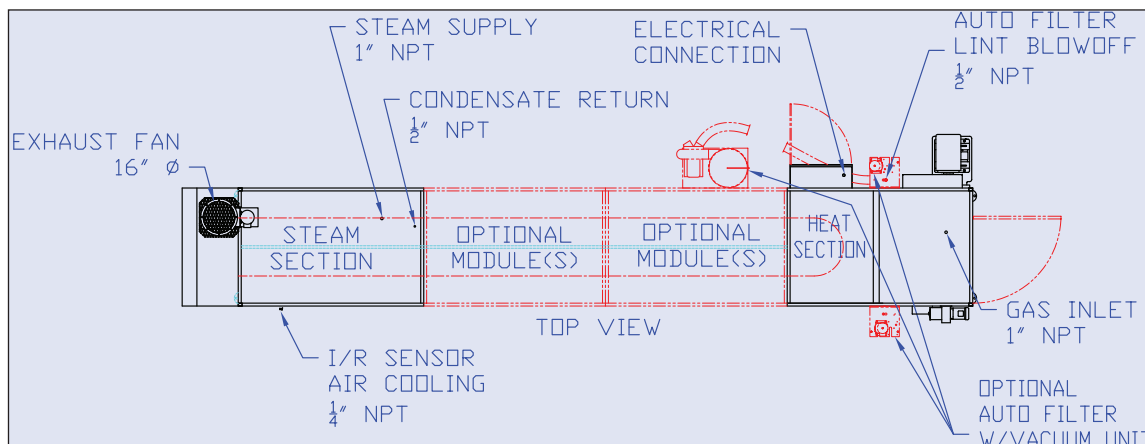
Usage (bhp):	15	15	15
Usage (kg/hr):	234	234	234
Maximum Pressure (psi/bar):	125 / 8.6	125 / 8.6	125 / 8.6
Steam Line (in/mm):	1.0 / 25	1.0 / 25	1.0 / 25
Return Line (in/mm):	0.5 / 12.5	0.5 / 12.5	0.5 / 12.5

Gas Requirements

Operating Pressure (w.c):	13	13	13
Operating Pressure (mbar):	33	33	33
Burner Rating (btu/hr):	1,500,000	1,500,000	1,500,000
Burner Rating (kW)	440	440	440
Average Usage (btu/hr):	300,000	475,000	750,000
Average Usage (kW):	88	140	220

Ventilation Requirements

Exhaust Duct Size (in/mm):	16 / 407	16 / 407	16 / 407
----------------------------	----------	----------	----------



The product may be covered by one or more of the following patents: Patent No: 7,845,037; 6,862,744; 6,910,291; 7,845,197; 6,311,526.

Further patents may be pending.

The color stainless steel is a registered trademark of Leonard Automatics, Inc.

*Please consult layout drawings for detailed dimensions including conveyor, control panels and utility connections. Specifications may change without notice. Made in the USA. Updated: 02/27/2017



5894 Balsom Ridge Rd. / PO Box 501 Denver, NC 28037
 ph: 704-483-9316 / fx: 704-483-4538
 sales@leonardautomatics.com - <http://leonardautomatics.com>