



VTP SERIES

16-GH, 24-GH & 32-GH

TRIPLE PASS TUNNEL FINISHERS



LEONARD AUTOMATICS, INC.

"our reputation is stainless"®

For the last **30 years**, you have had two choices in tunnel finishers: straight through and U-turn. The new **VTP Series** (*patent pending*) is a leap forward in the evolution of garment finishing technology. This radical new design provides higher production rates, increased quality of finish and greater energy efficiency, all the while maintaining the high standards of workmanship, quality components and long life you expect from a Leonard tunnel.

As the leading innovators in tunnel finisher design and construction, Leonard Automatics, Inc., works hard to continually improve our products. It is our goal to provide you with equipment made from the highest quality materials and components so you can be assured the equipment you purchase will provide years of trouble-free service.

Our most recent advancement is possibly our most significant. The new triple pass (*patent pending*) design increases heat within the tunnel, reduces energy consumption and produces a higher quality finish.

And because our patented Simple Addition modularity allows your tunnel to grow as your business does, the Triple Pass could be the last tunnel you ever buy.

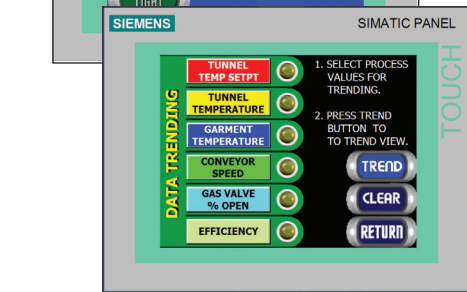
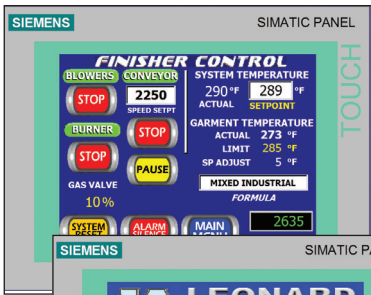
"our reputation is stainless"®

And, so is our equipment. Just like the rest of our tunnels, the VTP Series is constructed with stainless steel panels to provide the high level of corrosion resistance needed for continued operation in the extreme environment of an industrial laundry.



"S-Turn" Technology

The finishing of a garment starts in the steam chamber. The design of our steam header creates a higher velocity of steam that carries more energy and achieves proper finishing temperature faster. The incorporation of an **"S-Turn"** causes the garments to fan open exposing their centers to direct steam injection. More steam heat is delivered to the garment resulting in better temperature rise without increasing floor space requirements. Steam tubes are configured to fully surround the garment with steam.



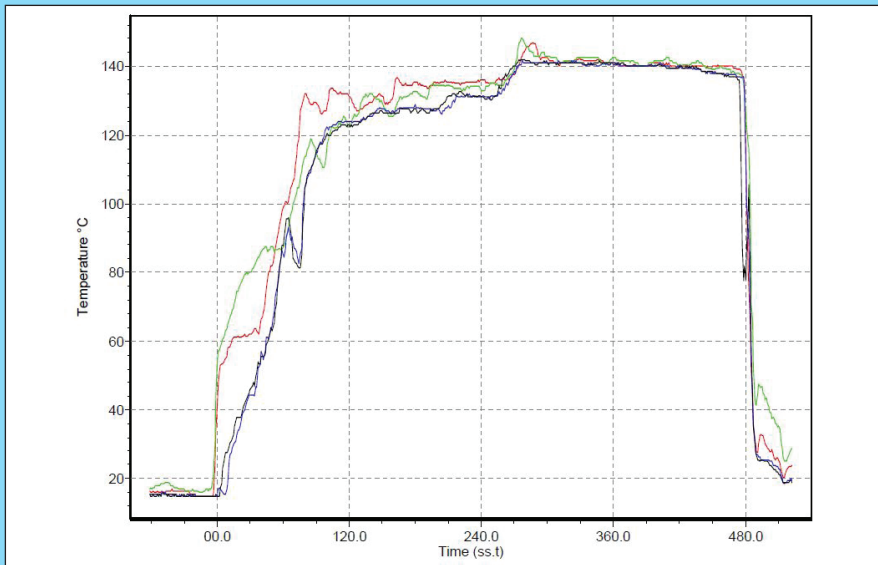
PLC Control System

Leonard Automaticd is proud to feature the **PLC Interface Control Center** on the VTP Series of products. The touch screen allows for intuitive and straight forward access to all tunnel operational controls. Features include automated troubleshooting, maintenance schedules, alarm logs, PM schedule, runtime history and much more. **Total tunnel control** is now at your fingertips.

Other VTP Series Features & Options

- *Automated troubleshooting*
- *Automated maintenance scheduling and prompts*
- *Alarm history*
- *Password Protected*
- *Maintenance history*
- *Automated over-temperature shut-down*
- *Lint filter monitoring*
- *Ethernet module*
- *External blower shaft*
- *Factory installed exhaust system*
- *External steam header*
- *External wiring*
- *Rear door safety shut-down*
- *Adjustable air louvers*
- *Patented "Simple Addition" modularity*
- *Infrared temp. control*
- *Pacer Production Management System*
- *Burner & Conveyor Interlocking System*
- *UL Listed Control Panel*

Real Data



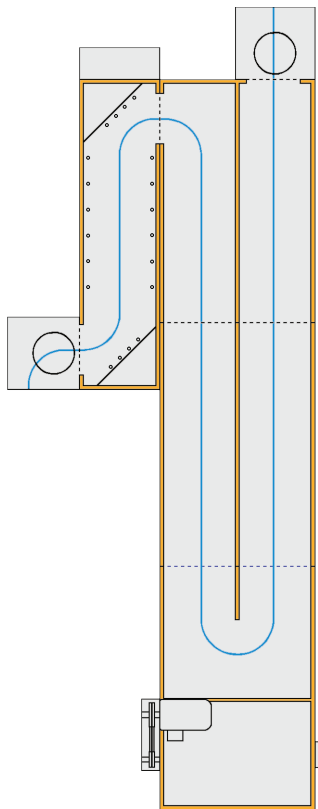
Shown is actual temperature data* taken from within a **VTP-24 GH** in full production. Probes recorded the air temperature above the garment (**RED**), the garment temperature inside the shirt pocket (**GREEN**) and inside the tail of the shirt (**BLUE**), and the air temperature 6 inches below the garment (**BLACK**). The temperature differential between the red and black lines show that moisture is being removed through evaporation. As the four lines converge, the garment is dry and the finishing is complete.

*Data reflects extracted pants being processed.

TECHNICAL SPECIFICATIONS

The **unique design** of the VTP Series allows for **better containment of steam** in the conditioning chamber as well as less atmospheric draw from outside the tunnel. This provides **greater heat transfer** for higher evaporation rates which **increases production** while producing a higher quality finish than standard methods of garment finishing.

Details of the revolutionary “**Triple Pass**” concept. Available in three different models to fit your specific production needs... 16, 24 or 32.



VTP-24 GH

	VTP-16	VTP-24	VTP-32
Machine Size			
Length (in/mm):	265 / 6,731	358 / 9,093	450 / 11,430
Width (in/mm):	136 / 3,454	136 / 3,454	136 / 3,454
Height (in/mm):	104 / 2,642	104 / 2,642	104 / 2,642
Weight (lbs/kg):	7,200 / 3,266	9,700 / 4,400	12,200 / 5,534

Electrical Service *(standard equipment with no exhaust)*

Standard Voltage:	230 or 460 / 60hz / 3ph		
Full Load Amps:	62 / 31	62 / 31	70 / 35

Steam Requirements *(for steam heated tunnels)*

Usage (bhp/hr):	15	15	15
Usage (kg/hr):	234	234	234
Maximum Pressure (psi/bar):	125 / 8.6	125 / 8.6	125 / 8.6
Steam Line (in/mm):	1 / 25	1 / 25	1 / 25
Return Line (in/mm):	0.5 / 12.5	0.5 / 12.5	0.5 / 12.5

Gas Requirements

Operating Pressure (w.c):	13	13	13
Operating Pressure (mbar):	33	33	33
Burner Rating (btu/hr):	1,500,000	1,500,000	1,500,000
Burner Rating (kW)	440	440	440
Average Usage (btu/hr):	525,000	775,000	1,050,000
Average Usage (kW):	154	228	308

Ventilation Requirements

Exhaust Duct Size (in/mm):	12 / 407	12 / 407	12 / 407
----------------------------	----------	----------	----------

The product may be covered by one or more of the following patents: Patent No: 7,845,037; 6,862,744; 6,910,291; 7,845,197; 6,311,526.

Further patents may be pending.

The color stainless steel is a registered trademark of Leonard Automatics, Inc.

*Please consult layout drawings for detailed dimensions including conveyor, control panels and utility connections.

Specifications subject to change without notice.

Manufactured in the U.S.A.

Updated: 10/12/2018



5894 Balsom Ridge Rd. / PO Box 501 Denver, NC 28037
 ph: 704-483-9316 / fx: 704-483-4538
 sales@leonardautomatics.com - <http://leonardautomatics.com>