

TECHNICAL SPECIFICATIONS

	VE1-EH	VE1-GH	VE2-EH	VE2-GH	VE4-EH	VE4-GH
Machine Size						
Length (mm): <i>(does not include exhaust hood)</i>	48" (1,220)	48" (1,220)	108" (2,743)	108" (2,743)	192" (4,880)	192" (4,880)
Width (mm): <i>(does not include exhaust hood)</i>	60" (1,524)	60" (1,524)	64" (1,626)	64" (1,626)	60" (1,524)	60" (1,524)
Height (mm): <i>(does not include motor & gas train)</i>	86" (2,185)	86" (2,185)	86" (2,185)	86" (2,185)	86" (2,185)	86" (2,185)
Weight (kg):	1400 (635)	1300 (590)	2900 (1319)	2300 (1045)	4100 (1864)	4000 (1818)
Electrical Service						
Standard Voltage:	400v / 50hz / 3ph					
Nameplate Amps:	92	6	98	10	188	10
Kilowatt (kW):	52	-	52	-	105	-
Gas Requirements						
Gas Line:	n/a	1"	n/a	1"	n/a	1"
Operating Gas Press:	n/a	12 - 18" w.c.	n/a	12 - 18" w.c.	n/a	12 - 18" w.c.
Operating Gas Press:	n/a	30 - 46 mbar	n/a	30 - 46 mbar	n/a	30 - 46 mbar
Burner Rating (Btu):	n/a	400,000	n/a	400,000	n/a	400,000
Average Usage (Btu):	n/a	75,000	n/a	75,000	n/a	75,000
Average Usage (Watts):	n/a	22,000	n/a	22,000	n/a	22,000
Ventilation Requirements						
Exhaust Duct Size (mm):	12" (305)	12" (305)	12" (305)	12" (305)	12" (305)	12" (305)
Gas Train Vent:	n/a	1"	n/a	1"	n/a	1"

*Please consult layout drawings for detailed dimensions including conveyor, control panels and utility connections.
Specifications may change without notice.
Made in the USA.
Updated: 09-30-09



5894 Balsom Ridge Rd. / PO Box 501 Denver, NC 28037 ph: 704-483-9316 / fx: 704-483-4538
sales@leonardautomatics.com www.leonardautomatics.com



VE SERIES

VE1, VE2, VE4

BATCH CURING OVEN
AVAILABLE WITH GAS OR ELECTRIC HEAT



LEONARD AUTOMATICS, INC.

"our reputation is stainless"

The **VE Series batch curing ovens** are the perfect fit for garment manufacturers and dye houses requiring varied levels of production. The enclosed compartment contains the heat and allows for greater control of the airflow within the oven providing a more **consistent** result every time at a greater efficiency than with traditional batch ovens.

As the leading innovators in garment curing oven design and construction, Leonard Automatics, Inc., works hard to continually improve our products. It is our goal to provide you with equipment made from the highest quality materials and components so you can be assured the equipment you purchase will provide years of trouble-free service.

Leonard Automatics has developed the VE Series batch curing ovens designed specifically to produce consistent quality in varied amounts to suit your needs.

Available in three different sizes and three different sources of heat, the VE Series can meet your production requirements and do it in a way that is most economical to you. Built per order, all VE Series curing ovens can be customized to fit your particular needs.

"our reputation is stainless" 

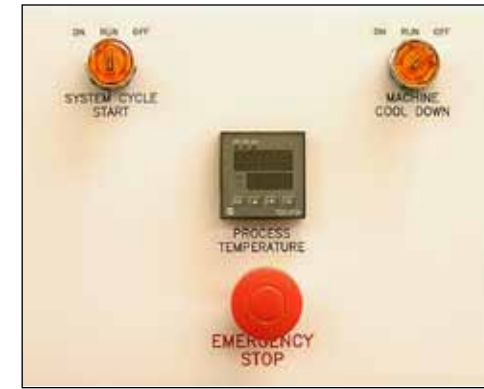
And, so is our equipment. Just like our other curing ovens, the **VE SERIES** is constructed of stainless steel panels to give you the best value for your investment. Corrosion and stain resistant, your new curing oven will last many years to come.



AIRFLOW

The airflow within the VE Series is **fully customizable** by manipulating a simple system of louvers and plates to reach the result

you are looking for. The unique air handling system **forces air** down through the garments as they hang within the oven. Full control is achievable in this way.



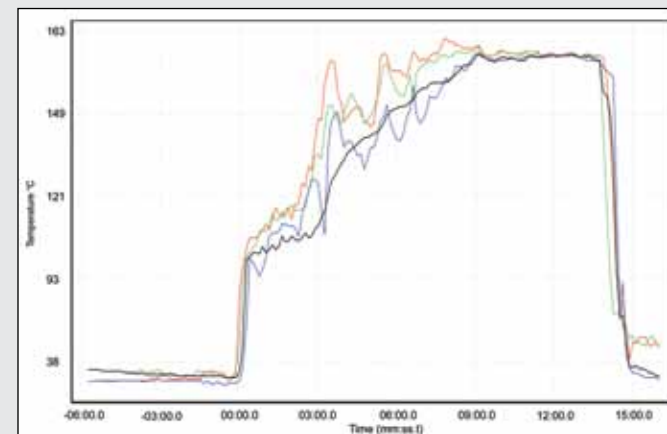
CONTROL SYSTEMS

The VE Series curing ovens could not be more simple to use. The pre-programmed logic control greatly simplifies the operation of the machine. Simply set the temperature needed for your

product and turn the System Cycle Start knob to the ON position and let the machine do the rest. The PLC will control the duration of the cycle, modulate the heat source (gas or electric) and vent the machine at the completion of the cycle.

A manual cool down feature is provided to assist in the expedited removal of heat and curing fumes.

REAL DATA



Even and controlled heating of the garment is of critical importance during the curing stages of garment manufacturing. The unique

design of the **VE Series** batch ovens allows for superior temperature control. The sample graph to the left shows how we are able to bring the garment up to temperature and hold it there for the duration of the cycle ensuring consistent and even curing throughout the process.

VE SERIES STANDARD FEATURES

- **Automated high-temp shut-down**
- **External blower shaft**
- **Factory installed exhaust system**
- **External wiring**
- **Rear and front door safety shut-down**
- **Adjustable air louvers**
- **Stainless Steel Panel Design**
- **UL Listed Control Panel**

VE SERIES OPTIONAL FEATURES

- **Temperature Chart Recorder**
- **Internal light**
- **Customizable airflow system**
- **CE Mark Available**