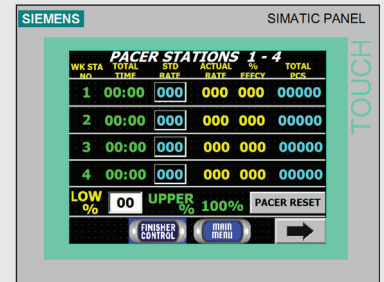
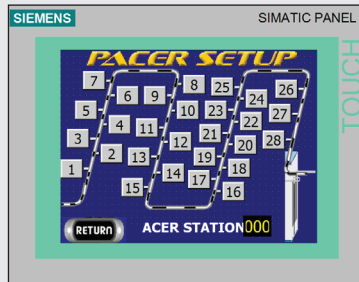
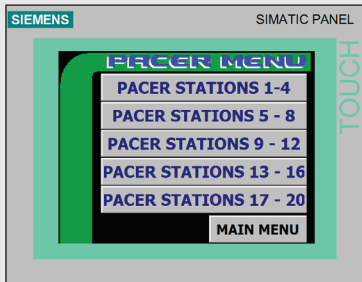




AUXILIARY PRODUCTS

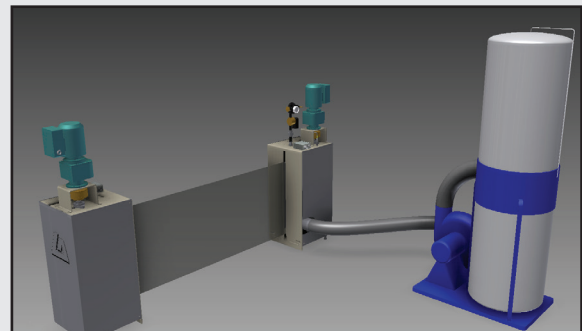
**OPTIONAL FEATURES TO EXPAND YOUR
CAPABILITIES, ENHANCE YOUR OPERA-
TION AND IMPROVE YOUR QUALITY.**



Pacer System



InfraRed Garment Temp Control
System



AutoFilter

LEONARD AUTOMATICS, INC.

"our reputation is stainless"®

AUTOFILTER

THE PATENTED AUTOMATIC LINT FILTRATION SYSTEM

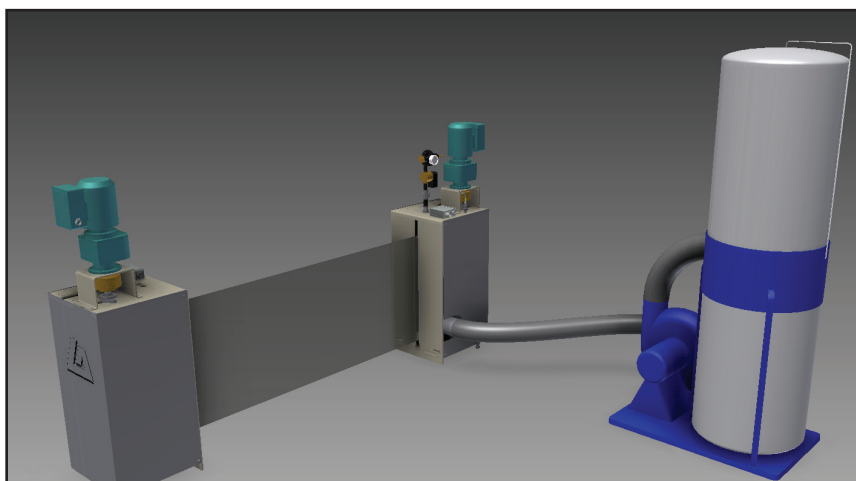
Proper airflow and heat distribution are important components of the performance of your garment finisher. Clogged lint filters compromise these crucial factors resulting in uneven and inconsistent finished product.



The patented **AutoFilter** is designed to address this very issue. By automatically cleaning itself while the finisher is in operation, the airflow and temperature within the tunnel will be more consistent; therefore, the tunnel will provide better overall garment quality and production rates. Modular in itself, the **AutoFilter** can be added to existing U-Turn style tunnel finishers.

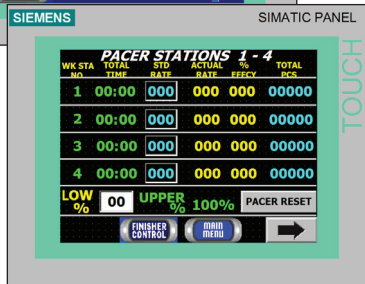
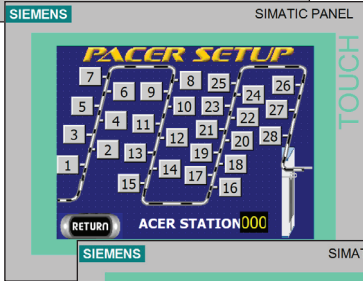
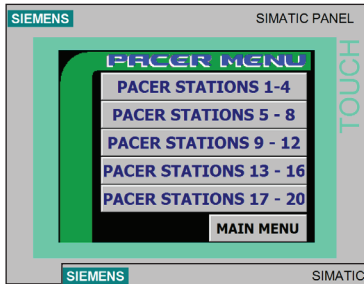
AUTOFILTER BENIFITS

- Fully automatic
- Stainless steel filter media
- Maintain consistent airflow
- Maintain consistent heating
- High pressure blow-off system
- Powerful vacuum system
- Large Lint Bags
- Field adjustable timers
- Attractive ROI
- Reduced downtime
- Increased prodction



PACER

PRODUCTION MANAGEMENT & TRAINING SYSTEM



This real-time monitoring, reporting, and training system provides plant management with a simplified method of training new employees, increasing individual production, data tracking per employee, and customized reporting for data trending and analysis. The **Pacer System** provides a range of functionality that is sure to meet your individual needs.

- Monitors production rate
- Provides visual feedback
- Production rates can be set “on the fly”
- On screen reporting
- Improves worker proficiency

Pacer is the last trainer you will need to hire!

SLANT TABLE & HANGER STANDS

ERGONOMIC SOLUTIONS TO IMPROVE PRODUCTION

Ergonomics has become increasingly important in recent years, and Leonard Automatics has met that need with our **Slant Table** and **Hanger Stand** workstations. By providing ergonomically correct workstations, your staff will experience less fatigue.

The Slant Table keeps garments within reach. As the worker picks a garment to hang, the pile slides down the table to keep a supply of product within reach at all times.

The Hanger Stand holds a hanger in place while the operator places the product on the hanger. With adjustable height and able to hold fifty hangers at a time, the Hanger Stand reduces excessive movement and increases production.



INFARED GARMENT TEMP CONTROL SYSTEM

AUTOMATED TEMPERATURE CONTROLS

Historically, tunnel finishers only measured air temperature. Now, with the addition of this option you have the power to actively monitor garment temperatures in real time while your tunnel is in operation. The tunnel will know when the garments within have reached a preset threshold high temperature and will dial back the burner enough to keep the garment within the desired temperature range while saving energy.



A graph, rendered in real time, shows garment temperature trends giving the operator unprecedented control over the finishing process. Target garment temperatures can now be accurately controlled for the highest quality finish.

ETHERNET MODULE

SIMPLIFIED PROGRAMMING, MONITORING & TROUBLESHOOTING

The optional Ethernet module provides a variety of functionality to the operator. Simplified reporting to the manager's computer is handled over your internal LAN; as well as, real time monitoring of basic tunnel operating parameters. An HTML *intranet* based interface provides easy to use and understand data for managers.

Remote access capabilities are also a possibility with the Ethernet module. Troubleshooting has never been easier with a Leonard technician remotely logged into your tunnel for first hand exposure to your tunnel's behavior. Our technician will be able to quickly and accurately diagnose your system and even reload a fresh program if necessary.



*Please consult layout drawings for detailed dimensions.
Specifications subject to change without notice.
Manufactured in the U.S.A.
Updated: 03/01/2017



5894 Balsom Ridge Rd. / PO Box 501 Denver, NC 28037
ph: 704-483-9316 / fx: 704-483-4538
sales@leonardautomatics.com - <http://leonardautomatics.com>