

ITEM	DESCRIPTION
1	MOVABLE CONTROL BOX
2	HIGH OUTPUT CIRCULATION BLOWER
3	GAS BURNER/ELECTRIC HEATER
4	MACHINE LOADING DOORS
5	ACCESS DOOR
6	EXHAUST FAN
7	COMBUSTION BLOWER (GAS HEATED MODELS)
8	GAS TRAIN WITH 1" PIPE INLET (GAS HEATED MODELS)

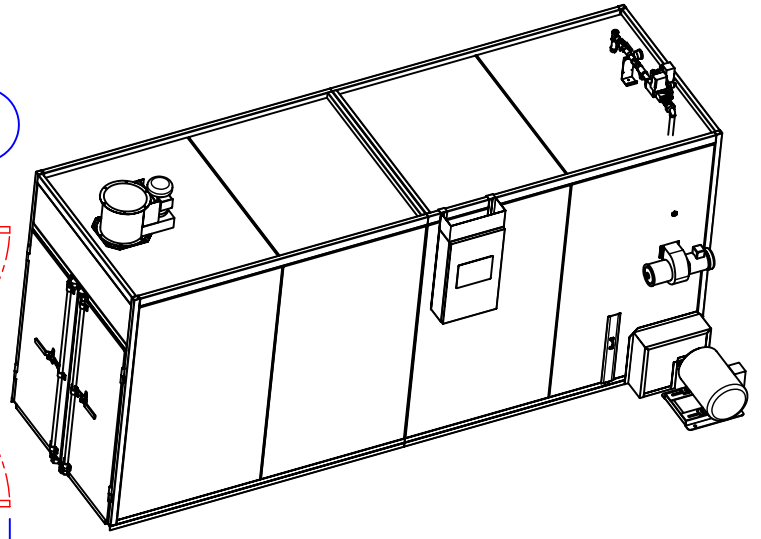
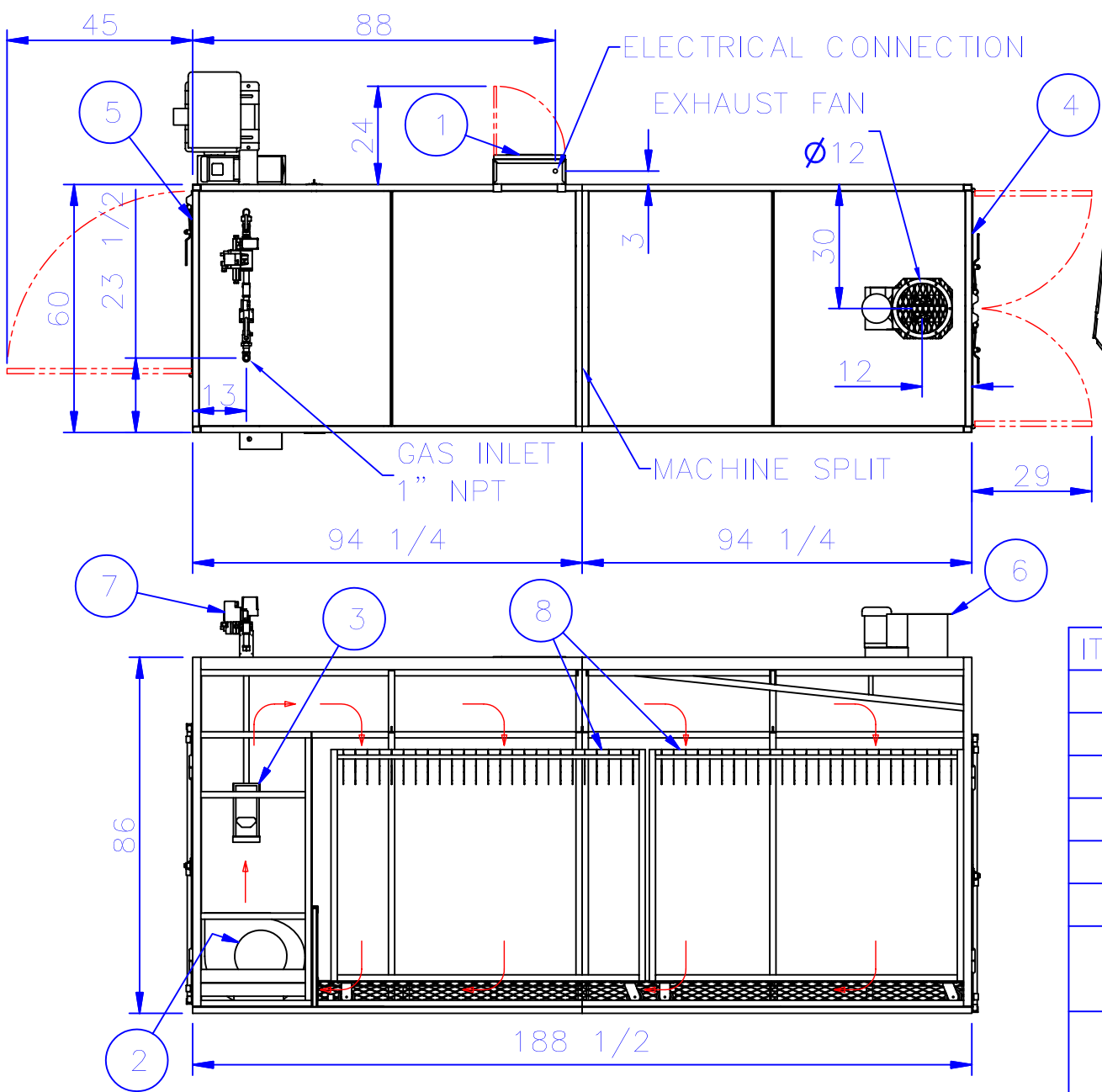


CLIENT  
DRAWING NAME  
**VE2 CURING OVEN**

DRAWN BY SPM  
CHKD BY  
APP'D BY  
SCALE NTS  
DRAWING NUMBER  
**VE2**

DRAWING REVISIONS			
REV#	DATE	BY	DESCRIPTION
-	9/12/2006	SPM	CREATED DRAWING
A	7/15/2008	SPM	UPDATED TITLE BLOCK

This document is the property of Leonard Automatics, Inc. It has been prepared to provide information to our client, for their decision making and approval process. Any other uses, without the express written permission of Leonard Automatics, Inc. is prohibited. Furthermore, any reproduction of this document, without the express written permission of Leonard Automatics, Inc. is also prohibited.  
**DWG IN INCHES**  
**SHEET 1 OF 1**



ITEM	DESCRIPTION
1	CONTROL BOX
2	CIRCULATION BLOWER
3	GAS BURNER/ELECTRIC HEATER
4	MACHINE LOADING DOORS
5	ACCESS DOOR
6	EXHAUST FAN
7	GAS TRAIN WITH 1" INLET (GAS HEATED MODELS)
8	GARMENT CARTS – 72 HANGER CAPACITY EACH



DRAWING NAME CLIENT  
**MODEL VE4**  
**CURING OVEN**

DRAWN BY SPM  
 CHKD BY  
 APPD BY  
 SCALE NTS  
 DRAWING NUMBER  
**VE4**

DRAWING REVISIONS				
REV#	DATE	BY	DESCRIPTION	
-	03/12/08	SPM	CREATED DRAWING	
A	02/20/08	SPM	UPDATED MACHINE GEOMETRY	

This document is the property of Leonard Automatics, Inc. It has been prepared to provide information to our client, for their decision making and approval process. Any other uses, without the express written permission of Leonard Automatics, Inc. is prohibited. Furthermore, any reproduction of this document, without the express written permission of Leonard Automatics, Inc. is also prohibited.